

Aesculap[®] CCR-XX

Radiolucent Cervical Retractor System –
For better fluoroscopic imaging

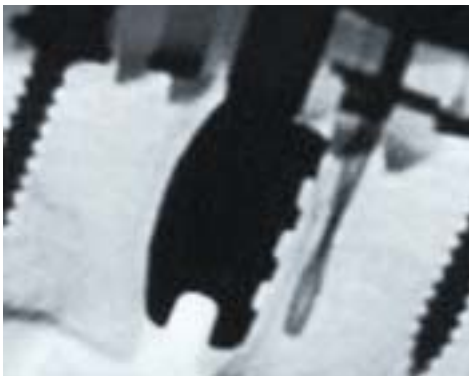
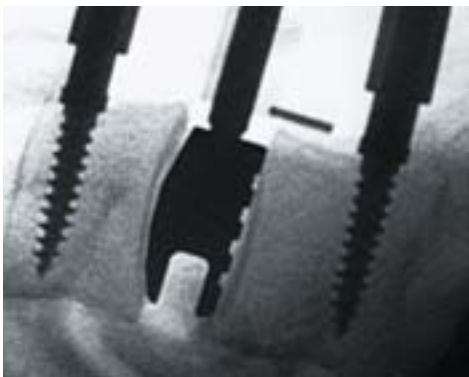


Aesculap Spine

CCR-XX

CASPAR Radiolucent Cervical Retractor System

The use of radiolucent CCR-XX blades provide better fluoroscopic imaging of the vertebral bodies and the anatomical landmarks required for a correct positioning and placement of implants.



■ Complete Blade Range

- 19 mm system for microsurgical techniques
- blade lengths from 30 mm up to 70 mm with either toothed or blunt ends



■ Side Load Mechanism

- easy and fast intra-operative handling
- handles for blades for a modular use as hand-held retractors
- 100 % compatible to previous ball snap closure
- 100 % compatible to standard stainless steel retractor

CCR-XX

CASPAR Radiolucent Cervical Retractor System

■ Double Hinge Retractors

- optimal intra-operative adaption
- basic retractor with tiltable butterfly screw



■ PEEK Blades with Ridges giving good purchase against soft tissue

- completely radiolucent X-ray imaging
- without light reflection
- firm yet gentle grip with secure fit
- new generation PEEK - high stability

Product Information

Blades

CCR-XX Radiolucent Toothed Blades

Art. No.	Description	length	width
BW251P	toothed blade, 19 mm	L = 30 mm	W = 19 mm
BW252P	toothed blade, 19 mm	L = 35 mm	W = 19 mm
BW253P	toothed blade, 19 mm	L = 40 mm	W = 19 mm
BW254P	toothed blade, 19 mm	L = 45 mm	W = 19 mm
BW255P	toothed blade, 19 mm	L = 50 mm	W = 19 mm
BW256P	toothed blade, 19 mm	L = 55 mm	W = 19 mm
BW257P	toothed blade, 19 mm	L = 60 mm	W = 19 mm
BW258P	toothed blade, 19 mm	L = 65 mm	W = 19 mm
BW259P	toothed blade, 19 mm	L = 70 mm	W = 19 mm



Radiolucent Blunt Blades

Art. No.	Description	length	width
BW261P	blunt blade, 19 mm	L = 30 mm	W = 19 mm
BW262P	blunt blade, 19 mm	L = 35 mm	W = 19 mm
BW263P	blunt blade, 19 mm	L = 40 mm	W = 19 mm
BW264P	blunt blade, 19 mm	L = 45 mm	W = 19 mm
BW265P	blunt blade, 19 mm	L = 50 mm	W = 19 mm
BW266P	blunt blade, 19 mm	L = 55 mm	W = 19 mm
BW267P	blunt blade, 19 mm	L = 60 mm	W = 19 mm
BW268P	blunt blade, 19 mm	L = 65 mm	W = 19 mm
BW269P	blunt blade, 19 mm	L = 70 mm	W = 19 mm



Product Information

Retractors

BW139R

CCR radiolucent basic retractor, preferably used for medial-lateral retraction, double hinge, tiltable butterfly screw, side load mechanism



BW137R

CCR radiolucent basic counter retractor, preferably used for longitudinal retraction, double hinge, side loading



BW138R

CCR radiolucent longitudinal counter retractor, preferably used for longitudinal retraction, with high loading, high torsion resistance



BW010R

Handle for blades for a modular use as hand-held retractors (as Langenbeck hand retractor)



BW011P

Depth gauge to determine the appropriate blade length



Complete Set Version



CCR Radiolucent CASPAR Retractor

Art. No.	Description	length	no. per set
BW251P	toothed blade, 19 mm	L = 30 mm	2
BW252P	toothed blade, 19 mm	L = 35 mm	2
BW253P	toothed blade, 19 mm	L = 40 mm	2
BW254P	toothed blade, 19 mm	L = 45 mm	2
BW255P	toothed blade, 19 mm	L = 50 mm	2
BW256P	toothed blade, 19 mm	L = 55 mm	2
BW257P	toothed blade, 19 mm	L = 60 mm	2
BW258P	toothed blade, 19 mm	L = 65 mm	2
BW259P	toothed blade, 19 mm	L = 70 mm	2
BW261P	blunt blade, 19 mm	L = 30 mm	2
BW262P	blunt blade, 19 mm	L = 35 mm	2
BW263P	blunt blade, 19 mm	L = 40 mm	2
BW264P	blunt blade, 19 mm	L = 45 mm	2
BW265P	blunt blade, 19 mm	L = 50 mm	2
BW266P	blunt blade, 19 mm	L = 55 mm	2
BW267P	blunt blade, 19 mm	L = 60 mm	2
BW268P	blunt blade, 19 mm	L = 65 mm	2
BW269P	blunt blade, 19 mm	L = 70 mm	2
BW137R	CCR basic counter retractor		1
BW138R	CCR longitudinal counter retractor		1
BW139R	CCR basic retractor		1
BW010R	handle		2
BW011R	depth gauge		1
BW125P	tray with lid		1

Product Information

Minimal Set Version



CCR Radiolucent CASPAR Retractor

Art. No.	Description	length	no. per set
BW251P	toothed blade, 19 mm	L = 30 mm	2
BW252P	toothed blade, 19 mm	L = 35 mm	2
BW253P	toothed blade, 19 mm	L = 40 mm	2
BW254P	toothed blade, 19 mm	L = 45 mm	2
BW255P	toothed blade, 19 mm	L = 50 mm	2
BW256P	toothed blade, 19 mm	L = 55 mm	2
BW257P	toothed blade, 19 mm	L = 60 mm	2
BW258P	toothed blade, 19 mm	L = 65 mm	2
BW259P	toothed blade, 19 mm	L = 70 mm	2
BW139R	CCR basic retractor		1
BW125P	tray with lid		1
JK440	container	L = 90 mm	1
JP006P	container lid		1

Complete Set Version



CCR Radiolucent CASPAR Retractor

Art. No.	Description	material type	length	no. per set
BW251P	toothed blade, 19 mm	radiolucent	L = 30 mm	2
BW252P	toothed blade, 19 mm	radiolucent	L = 35 mm	2
BW253P	toothed blade, 19 mm	radiolucent	L = 40 mm	2
BW254P	toothed blade, 19 mm	radiolucent	L = 45 mm	2
BW255P	toothed blade, 19 mm	radiolucent	L = 50 mm	2
BW256P	toothed blade, 19 mm	radiolucent	L = 55 mm	2
BW257P	toothed blade, 19 mm	radiolucent	L = 60 mm	2
BW258P	toothed blade, 19 mm	radiolucent	L = 65 mm	2
BW259P	toothed blade, 19 mm	radiolucent	L = 70 mm	2
BW261P	blunt blade, 19 mm	radiolucent	L = 30 mm	2
BW262P	blunt blade, 19 mm	radiolucent	L = 35 mm	2
BW263P	blunt blade, 19 mm	radiolucent	L = 40 mm	2
BW264P	blunt blade, 19 mm	radiolucent	L = 45 mm	2
BW265P	blunt blade, 19 mm	radiolucent	L = 50 mm	2
BW266P	blunt blade, 19 mm	radiolucent	L = 55 mm	2
BW267P	blunt blade, 19 mm	radiolucent	L = 60 mm	2
BW268P	blunt blade, 19 mm	radiolucent	L = 65 mm	2
BW269P	blunt blade, 19 mm	radiolucent	L = 70 mm	2
BW125P	tray with lid	standard		1
JK440	container	standard	L = 90 mm	1
JP006	container lid	standard		1



CASPAR Distractor

with locking mechanism and off-set option

Lockable Cervical Distractor with off-set option



- optimal intra-operative adaption
- distractor with tiltable butterfly screw
- sleeves with locking mechanism to interlock the distraction screws



FW848R



FW849R

- safe fixation to the vertebral bodies
- no slip-off of the sleeves from the screws
- real parallel distraction over the whole surgery

Product Overview

FF908R

twist drill



FW850R

screw driver for lockable distraction screw



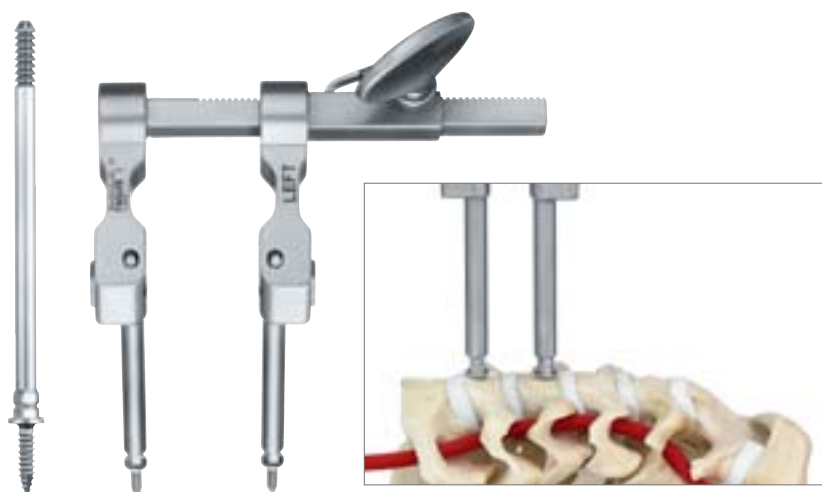
lockable standard distraction screw

FW861SU = 12 mm

FW862SU = 14 mm

FW855SU = 16 mm

FW856SU = 18 mm



lockable off-set distraction screw

FW851SU = 12 mm

FW852SU = 14 mm

FW853SU = 16 mm

FW854SU = 18 mm



